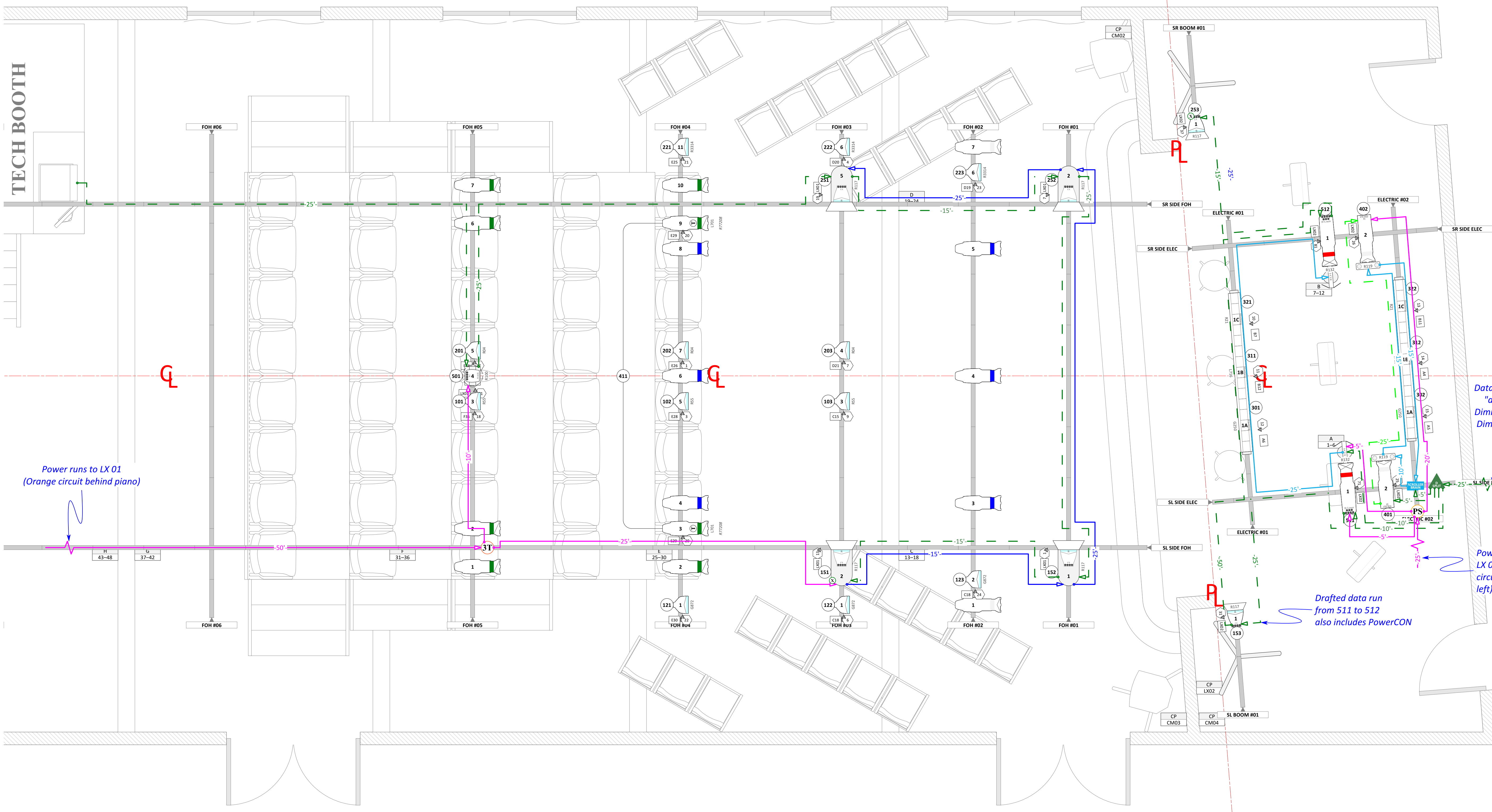


Total Cable Count

Edison	PowerCON	DMX-5	DMX-4	Other
2 x 5'	1 x 15'	2 x 5'	1 x 10'	1 x 25' Cat5
1 x 10'	4 x 25'	2 x 10'	2 x 15'	1 x Cat5>DMX-5
1 x 20'	1 x 50'	3 x 15'	1 x 25'	
2 x 25'	2 x PC>Edison	5 x 25'		
1 x 50'		2 x 50'		
2 x Tri-Tap		2 x Terminator		
1 x Power Strip				
2 x 20A Edison Adapter				

Key

Edison Jumper Cable:		Length
PowerCON Jumper Cable:		Length
DMX Cable:		Length (Cat5)
4-Pin Cable:		Length



INSTRUMENT/ACCESSORY KEY

SYMBOL	INSTR./ACCESS.	QTY.	LOAD
	ETC Source Four PAR WFL	12	575W
	Custom ColorSource PAR64 WR	4	120W
	ETC ColorSource PAR WR	2	120W
	ETC Source Four 26'	8	575W
	ETC Source Four 36'	6	575W
	ETC Source Four 50'	2	575W
	ETC Source 4WRD II 50'	2	182W
	ETC Source Four LED Series 2 Lustr 19'	2	171W
	L&E MiniStrip 3-Circuit	2	750W
	Chauvet Rogue R1 Wash	1	161W
	Chroma Q Plus Color Changer	2	
	Rosco I-Cue	2	17W
	4-Leaf Barn Doors	6	
	Template	2	

COLOR & GOBO SUMMARY

Color	Size	Count
G250	4.75" x 3.5"	2
G872	7.5"	3
L701	6.25"	2
L716	4.75" x 3.5"	2
R04	7.5"	3
R21	4.75" x 3.5"	2
R55	7.5"	3
R100	R1 Wash	1
R117	10"	4
R119	7.5"	2
R132	6.25"	2
R3314	7.5"	3

Temp	Size	Count
R77208	A	2

Lighting Design by **ALEX J. ALEGRIA**
 LTPALEX@gmail.com
 (520) 730-4635
 ltpalex.weebly.com

The Cabaret Theatre
 tick, tick... BOOM!
 Winding Road Theatre Ensemble

PRODUCTION TEAM
 Director: Zach Wetzel & Maria A. Caprile

REVISION HISTORY

#	DESCRIPTION	DATE
1	Final	11 Feb 2023
2		
3		
4		
5		

- ### LIGHTING NOTES
- Please direct all questions to the LIGHTING DESIGNER.
 - Circuits are written as Circuit Box Let. | Dimmer No.
 - Exact placement of Booms TBD at Load-in.
 - ColorSource PAR is in 6ch [Direct] mode.
 - Source Four Series 2 Lustr is in 10ch [Direct StrFrn] mode.
 - Rogue R1 Wash is in 19ch mode.
 - Plus Color Changer is in 2ch [M2] mode.
 - I-Cue is in 4ch [16B] mode.

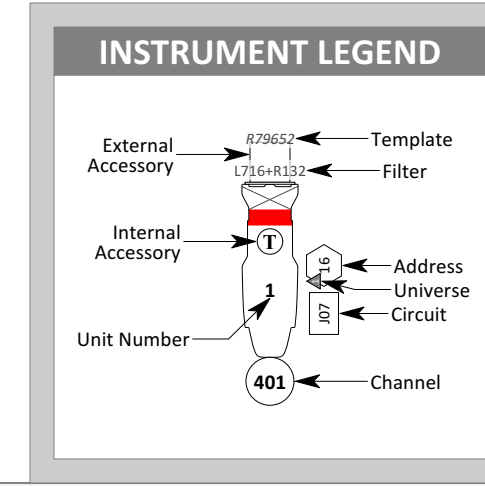


PLATE: **2**
 Lighting - Power & Data
 SCALE: 1/2" = 1'-0"
 PLOT: DRAFTED BY Alex J. Alegria
 PAPER TYPE: ARCH D (24" x 36")